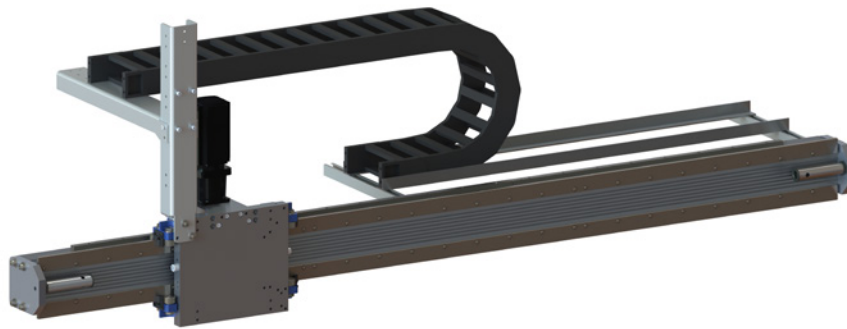


SIZE 1

LINEAR HORIZONTAL AXIS LHA-1



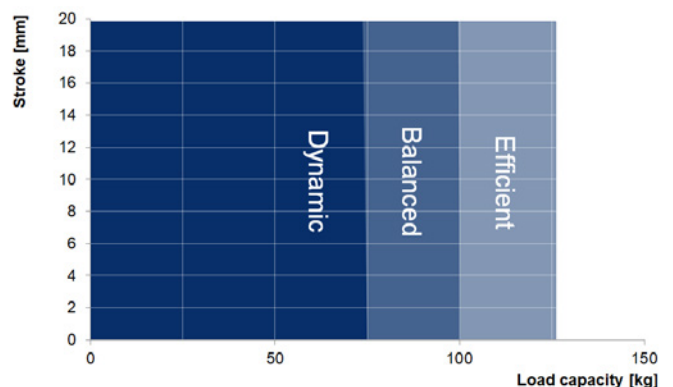
THE LHA-1 IS DESIGNED FOR HANDLING WEIGHTS OF UP TO 125 KG AND REACHES A MOVEMENT SPEED OF UP TO 4.5 M/S WITH ACCELERATION OF UP TO 6 M/S².

IT IS IDEAL FOR TRANSPORTING, HANDLING FIXTURES, ATTACHING ADDITIONAL AXES OR AS A SEVENTH AXIS FOR A ROBOT.

THE RACK AND PINION SYSTEM ALLOWS THE TRANSMISSION OF LARGE FORCES AS WELL AS PRECISE POSITIONING. USING INTEGRATED T-NUT RAILS, THE SUPPORT ENABLES THE RACK AND ALL ATTACHED COMPONENTS TO BE POSITIONED FLEXIBLY DURING ASSEMBLY. THE LINEAR HORIZONTAL AXIS CAN BE EXTENDED TO OVER 20 M.

LOAD CLASSES

- **Dynamic** ($v = 4.5 \text{ m/s}$, $a = 6 \text{ m/s}^2$)
with additional load of up to 75 kg*
- **Balanced** ($v = 3 \text{ m/s}$, $a = 4.5 \text{ m/s}^2$)
with additional load of up to 100 kg*
- **Efficient** ($v = 2 \text{ m/s}$, $a = 3 \text{ m/s}^2$)
with additional load of up to 125 kg*



MORE INFORMATION?

Do you require more detailed information or a CAD model of our product? Then please get in touch with our sales team.

vertrieb@fibro-laepfle.de