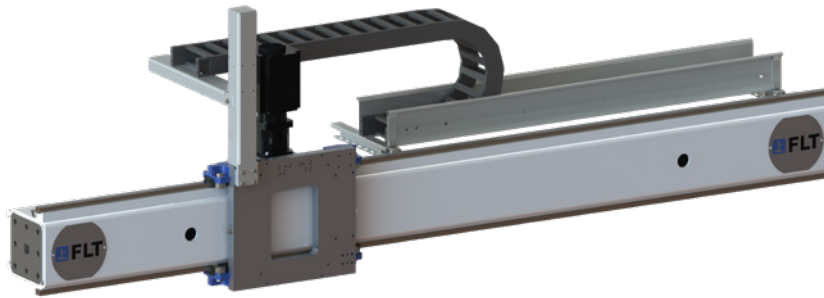


# SIZE 4

## LINEAR HORIZONTAL AXIS LHA-4



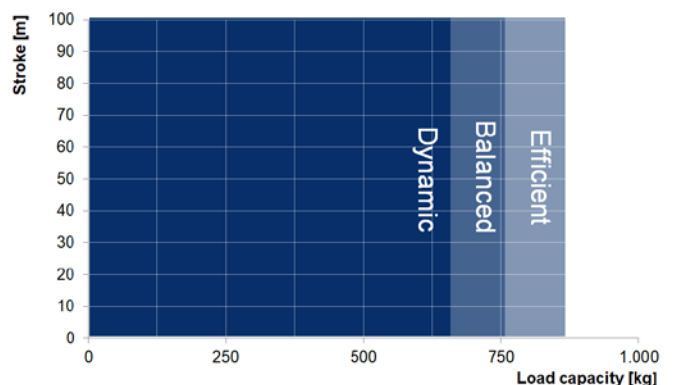
THE LHA-4 IS DESIGNED FOR HANDLING WEIGHTS OF UP TO 850 KG AND REACHES A MOVEMENT SPEED OF UP TO 4 M/S WITH ACCELERATION OF UP TO 5 M/S<sup>2</sup>.

IT IS IDEAL FOR TRANSPORTING, HANDLING FIXTURES, ATTACHING ADDITIONAL AXES OR AS A SEVENTH AXIS FOR A ROBOT.

THE RACK AND PINION SYSTEM ALLOWS THE TRANSMISSION OF LARGE FORCES AS WELL AS PRECISE POSITIONING. THE DOVETAIL GUIDE ENABLES THE RACK AND ALL ATTACHED COMPONENTS TO BE POSITIONED FLEXIBLY DURING ASSEMBLY. THE LINEAR HORIZONTAL AXIS CAN BE EXTENDED TO OVER 100 M.

### LOAD CLASSES

- **Dynamic** ( $v = 4 \text{ m/s}$ ,  $a = 5 \text{ m/s}^2$ )  
with additional load of up to 650 kg\*
- **Balanced** ( $v = 3 \text{ m/s}$ ,  $a = 3 \text{ m/s}^2$ )  
with additional load of up to 750 kg\*
- **Efficient** ( $v = 2 \text{ m/s}$ ,  $a = 2 \text{ m/s}^2$ )  
with additional load of up to 850 kg\*



### MORE INFORMATION?

Do you require more detailed information or a CAD model of our product? Then please get in touch with our sales team.

[vertrieb@fibro-laepfle.de](mailto:vertrieb@fibro-laepfle.de)